

Tackling Healthcare Associated Infections Outside of Hospital

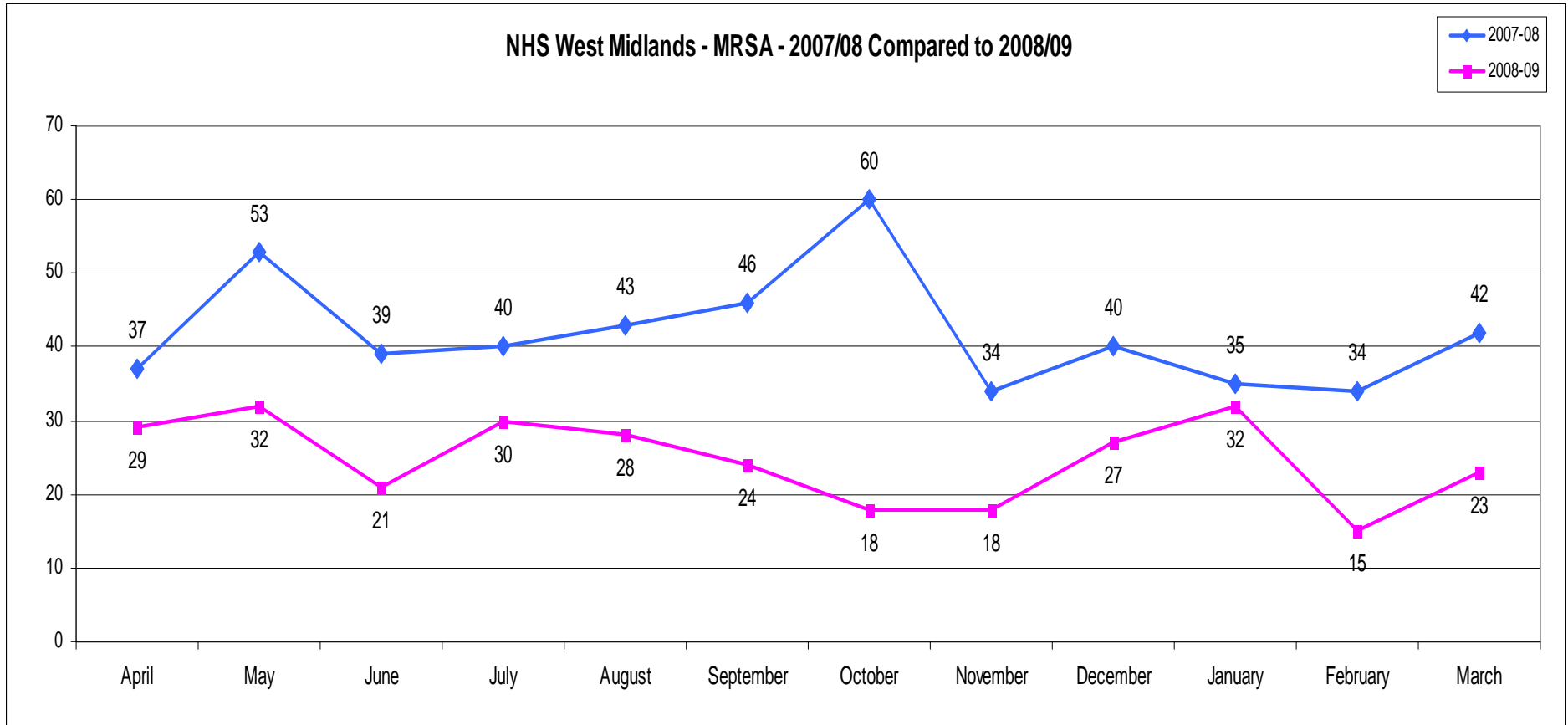
HCAI - Regional Perspective

Kay Roberts

HCAI Programme

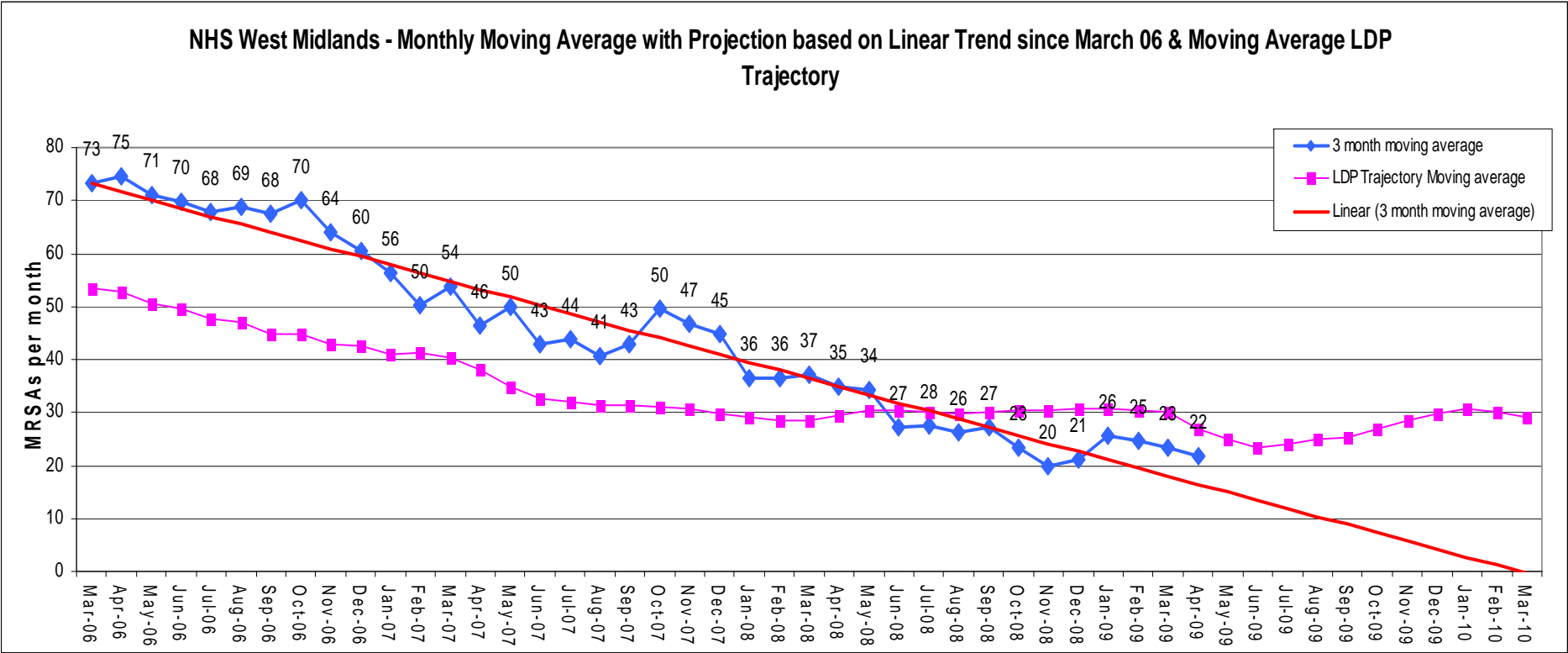
NHS West Midlands

MRSA – Monthly Trend

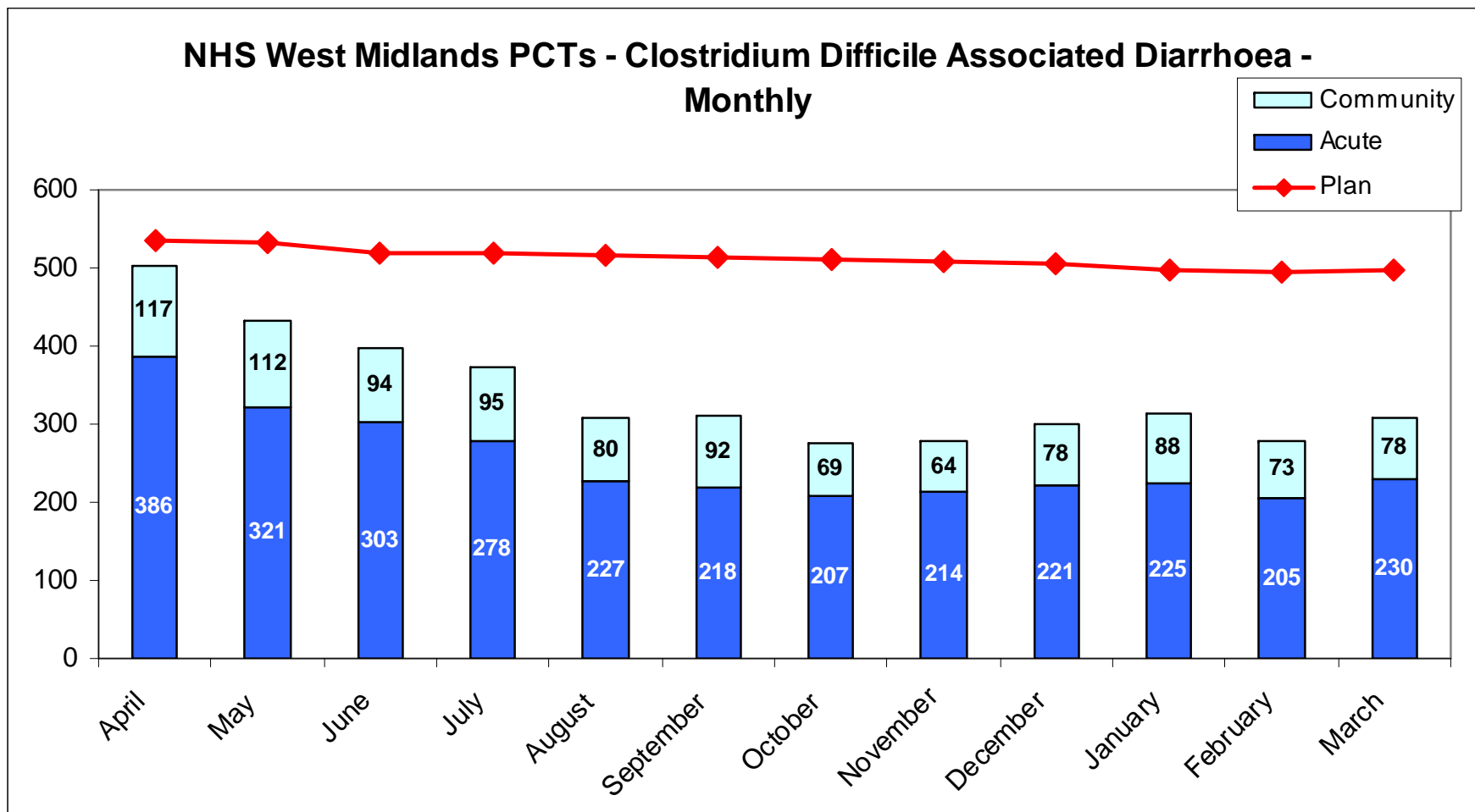


3 month rolling average - MRSA

MRSA Bacteraemia



C diff



Current National Challenges

- MRSA – Year on year reductions – sustainability
- C diff – 30% reduction over 3 years – defined targets set for Acute trusts and for PCT's
- Screening MRSA – Electives – March 2009
- Screening for unplanned care – March 2011
- Compliance with Hygiene code - CQC

Regional Priorities

– zero tolerance of avoidable infections

Performance management

- Monitoring MRSA Bacteraemia
- Monitoring of C diff toxin +’ve rates
- SUI reporting and RCA reviews
- Screening compliance
- CQC reports and follow-up
- Outbreak management

Regional Priorities – cont.

Support

- Health Economy Partnerships
 - Strategy
 - Antibiotic Prescribing
 - Screening
 - Communication
 - RCA
- RCA training Preparation and support for hygiene code inspections
- HCAI Forum - learning and cascade
- 5 work programmes
 - Defining MRSA Screening
 - Urinary Catheter Pathway
 - Chronic Wound Pathway
 - Education provision
 - Communication strategy
- Education

What makes the difference

- Whole Health Economy working
- Leadership / Ownership
- Effective engagement / champions
- Clear assurance frameworks
- Clear accountabilities and responsibilities
- Use of data across the organisation
- Consistent clinical practice
- Clear priorities and focus – RCA
- Effective cleaning schedules